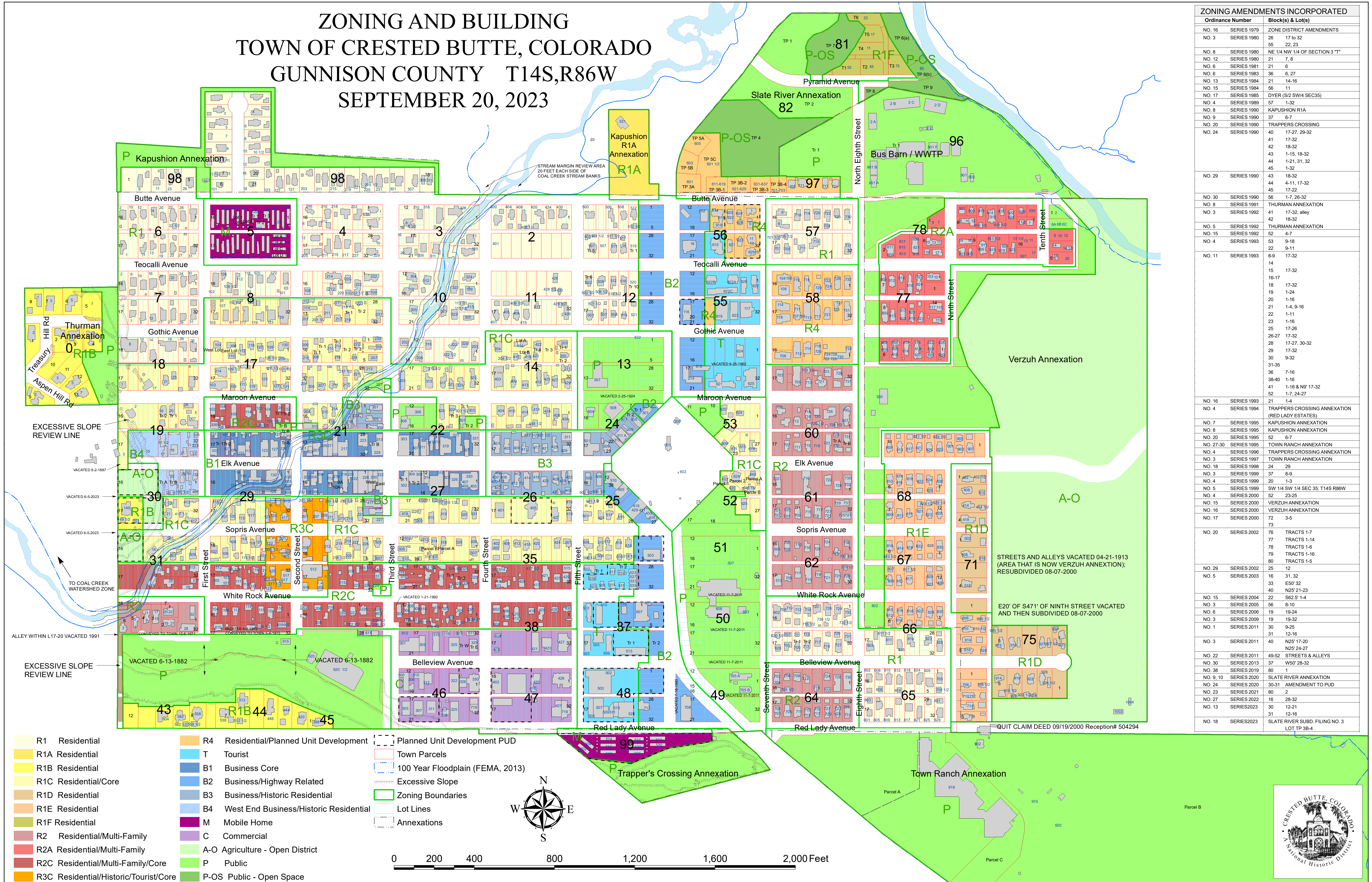


# ZONING AND BUILDING TOWN OF CRESTED BUTTE, COLORADO GUNNISON COUNTY T14S,R86W SEPTEMBER 20, 2023



Ordinance Number	Block(s) & Lot(s)
NO. 16 SERIES 1979	ZONE DISTRICT AMENDMENTS
NO. 3 SERIES 1980	26 17-16-32
	55 22-23
NO. 8 SERIES 1980	NE 1/4 NW 1/4 OF SECTION 3 "T"
NO. 12 SERIES 1980	21 7-8
NO. 6 SERIES 1981	21 6
NO. 6 SERIES 1983	36 6-27
NO. 13 SERIES 1984	21 14-16
NO. 15 SERIES 1984	56 11
NO. 17 SERIES 1985	DYER (S/2 SW/4 SEC35)
NO. 4 SERIES 1989	57 1-32
NO. 8 SERIES 1990	KAPUSHION R1A
NO. 9 SERIES 1990	37 6-7
NO. 20 SERIES 1990	TRAPPERS CROSSING
NO. 24 SERIES 1990	40 17-27, 29-32
	41 17-32
	42 18-32
	43 1-15, 18-32
	44 1-21, 31, 32
	45 1-32
NO. 29 SERIES 1990	43 18-32
	44 4-11, 17-32
	45 17-22
NO. 30 SERIES 1990	56 1-7, 26-32
NO. 8 SERIES 1991	THURMAN ANNEXATION
NO. 3 SERIES 1992	41 17-32, alley
	42 18-32
NO. 5 SERIES 1992	THURMAN ANNEXATION
NO. 15 SERIES 1992	52 4-7
NO. 4 SERIES 1993	53 9-18
	22 9-11
NO. 11 SERIES 1993	8-9 17-32
	14
	15 17-32
	16-17
	18 17-32
	19 1-24
	20 1-16
	21 1-4, 9-16
	22 1-11
	23 1-16
	25 17-26
	26-27 17-32
	28 17-27, 30-32
	29 17-32
	30 9-32
	31-35
	36 7-16
	38-40 1-16
	41 1-16 & N9' 17-32
	52 1-7, 24-27
NO. 16 SERIES 1993	21 1-4
NO. 4 SERIES 1994	TRAPPERS CROSSING ANNEXATION (RED LADY ESTATES)
NO. 7 SERIES 1995	KAPUSHION ANNEXATION
NO. 8 SERIES 1995	KAPUSHION ANNEXATION
NO. 20 SERIES 1995	52 6-7
NO. 27-30 SERIES 1995	TOWN RANCH ANNEXATION
NO. 4 SERIES 1996	TRAPPERS CROSSING ANNEXATION
NO. 3 SERIES 1997	TOWN RANCH ANNEXATION
NO. 18 SERIES 1998	24 29
NO. 3 SERIES 1999	37 8-9
NO. 4 SERIES 1999	20 1-3
NO. 5 SERIES 1999	SW 1/4 SW 1/4 SEC 35, T14S R86W
NO. 4 SERIES 2000	52 23-25
NO. 15 SERIES 2000	VERZUH ANNEXATION
NO. 16 SERIES 2000	VERZUH ANNEXATION
NO. 17 SERIES 2000	72 3-5
	73
NO. 20 SERIES 2002	76 TRACTS 1-7
	77 TRACTS 1-14
	78 TRACTS 1-6
	79 TRACTS 1-16
	80 TRACTS 1-5
NO. 29 SERIES 2002	25 12
NO. 5 SERIES 2003	16 31, 32
	33 E50' 32
	40 N25' 21-23
NO. 15 SERIES 2004	22 S62' 5' 1-4
NO. 3 SERIES 2005	56 8-10
NO. 6 SERIES 2006	19 19-24
NO. 3 SERIES 2009	19 19-32
NO. 1 SERIES 2011	30 9-25
	31 12-16
NO. 3 SERIES 2011	40 N25' 17-20
	N25' 24-27
NO. 22 SERIES 2011	49-52 STREETS & ALLEYS
NO. 30 SERIES 2013	37 W50' 28-32
NO. 38 SERIES 2019	80 1
NO. 9, 10 SERIES 2020	SLATE RIVER ANNEXATION
NO. 24 SERIES 2020	30-31 AMENDMENT TO PUD
NO. 23 SERIES 2021	80 2
NO. 27 SERIES 2022	16 28-32
NO. 13 SERIES 2023	30 12-21
	31 12-16
NO. 18 SERIES 2023	SLATE RIVER SUBD. FILING NO. 3
	LOT TP 3B-4

NOTE: This map is not to be used for survey or legal description purposes

